

1640

SKID LOADER

GEHL®



KEY FEATURES

- ✓ Ultra-Compact Skid Loader
- ✓ 909 mm (35.8") Width Without Bucket
- ✓ ROPS/FOPS Level II
- ✓ Dual T-Bar Control System
- ✓ Audible Back-Up Alarm
- ✓ Standard High Back Cushion Seat
- ✓ Lightweight for Easy Transport

KEY SPECIFICATIONS

- ✓ Operating capacity (50%) – 386 kg (850 lbs.)
- ✓ Overall height to top of ROPS – 1897 mm (74.7")
- ✓ Gross Power – 18.1 kW (24 hp) @ 2400 rpm
- ✓ Yanmar / 3TNV82A-BPMSR / Stage V Compliant
- ✓ 86 Nm (68 ft.-lbs.) @1200 rpm max torque
- ✓ 2438 mm (96") height to hinge pin
- ✓ 909 mm (35.8") machine width - less bucket
- ✓ 1352 kg (2,980 lbs.) operating weight

1640 SKID LOADER

SPECIFICATIONS

	IMPERIAL	METRIC	
DIMENSIONS	Overall Operating Height - Fully Raised	124.7"	3167 mm
	Height to Hinge Pin - Fully Raised	96"	2438 mm
	Overall Height to Top of ROPS	74.7"	1897 mm
	Overall Length with Bucket (w/o Counterweight)	101.4"	2576 mm
	Dump Angle at Full Height	46°	
	Dump Height - Fully Raised	72.3"	1836 mm
	Dump Reach at Full Height	14.8"	376 mm
	Maximum Rollback Angle at Ground	30°	
	Rollback Angle at Full Height	100°	
	Seat to Ground Height	34.6"	879 mm
	Wheelbase	30.5"	775 mm
	Overall Width - Less Bucket ^A	35.8"	909 mm
	Bucket Width	36"	914 mm
	Ground Clearance to Chassis	5.9"	150 mm
	Overall Length without Bucket (w/o Counterweight)	75"	1905 mm
	Rear Departure Angle	23°	
	Clearance Radius - Front with Bucket	58"	1473 mm
	Clearance Radius - Front without Bucket	32.8"	833 mm
	Clearance Radius - Rear (w/o Counterweight)	43.2"	1097 mm
	Standard Specification Tire Size	8.70 x 12	
ENGINE	Make	Yanmar	
	Model	3TNV82A-BPMSR Stage V Compliant	
	Gross Power @ 2400 rpm	18.1 kW	
	Net Power @ 2400 rpm	24 hp	17.9 kW
	Maximum Torque @ 1200 rpm	68 ft.-lbs.	86 Nm
	Displacement	81 cu.in.	1.3 L
HYDRAULICS	Auxiliary Hydraulic Flow - Standard	10.1 gpm	38.2 L/min
	High-Flow Auxiliary Hydraulics - Option	N/A	
	Reservoir Capacity	7.2 gal.	27.3 L
ELECTRICAL	Battery	12-volt	650 CCA
	Starter	12-volt	1.7 kW
	Alternator	40-amp	
CAPACITIES / WEIGHTS	Rated Operating Capacity ^A	850 lbs.	386 kg
	Rated Operating Capacity with Optional Counterweight ^B	N/A	
	Fuel Tank	7.7 gal.	29 L
	Travel Speed - Maximum	5.5 mph	8.9 km/hr
	Travel Speed with Two-Speed Option - Maximum	N/A	
	Operating Weight ^B - Approximate	2980 lbs.	1352 kg
SOUND / VIBRATION [*]	Noise Level / Environmental Level		
	Operator Ear		
	Hand / Arm Vibration		
	Whole Body Vibration		

A Per SAE J818, SAE J732, and ISO 14397

B Unit weight with standard bucket, 175 lbs. (79 kg) operator and full fuel tank

Gehl reserves the right to add improvements or make changes in features and specifications at any time without notice or obligation.

Gehl reminds users to read and understand the operator's manual before operating any equipment. Also, make sure all safety devices and shields are in place and functioning properly.

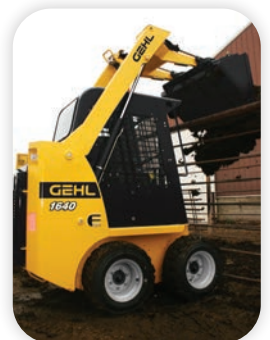


SUPER-COMPACT 36" (909 mm) width with 5.70 x 12 tire option, or 42" (1067 mm) width with 8.70 x 12 heavy-duty flotation standard tires.

POWerview® LIFT ARM provides strength, durability and excellent view of the tires and sides of the loader.

LIGHTWEIGHT TRANSPORTATION with an overall machine weight of less than 2,900 lbs. (1352 kg) makes the 1640E easily transportable.

DELUXE ENVIRONMENT is standard with a premium high-back seat. A high-back suspension seat option is available.



geh.com

One Gehl Way, West Bend, WI 53095

Phone: (262) 334-9461



GEHL COMPACT EQUIPMENT