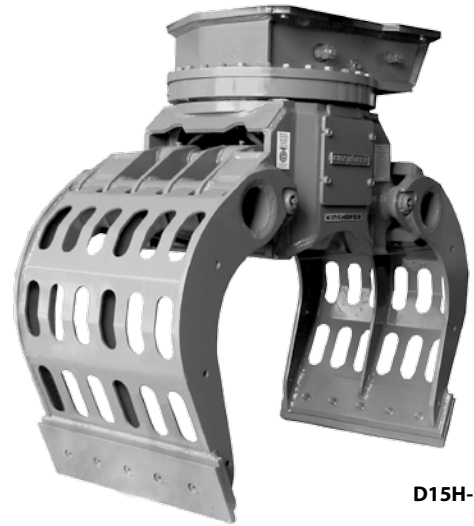


# D15H/20H/27H / D12H-P/D15H-P/20H-P/27H-P Demolition and Sorting Grab

**Robust multi purpose grab for excavators up to 12t/15t/20t/27t operating weight – ideal for demolition and segmentation of all kinds of building materials. Ideal for separating building debris and similar material.**

- The grab is available with ribs or a perforated skin – both versions let fine dust and gravel through. The durable cutting edges can retain different materials, using the edge tips.
- Long life is ensured due to the use of 500 HB steel in the manufacture of replaceable cutting edges.
- From D15 on: robust, fully integrated rotator that is fixed at 4 points to withstand external forces, with pressure relief valve to ensure overload protection, with connecting hoses located inside the hub.
- Exceptional closing forces through two horizontally positioned hydraulic cylinders that are protected by the bucket carrier.
- Cylinders are hydraulically cushioned.



D15H-P

Demolition and Sorting Grab with metal ribs D15H / D20H / D27H									
Type	Width B (mm)	Opening range A (mm)	Height C (mm)	Volume (litre)	Self-weight (kg)	Loading Capacity (kg)	Closing force (kN)	Torque (Nm)	Operating weight (t)
D15H-80	800	1540	1154	300	655	4000	36	3000	11 – 15
D20H-100	1000	1885	1353	450	1045	5000	43	4000	14 – 20
D27H-115	1150	2142	1515	800	1585	6000	63	5000	18 – 27

**Package consists of:** demolition and sorting grab, integrated **KINSHOFER** rotator with 4 fixing points, cutting edges and non-return valve

Demolition and Sorting Grab with perforated shells D12H-P / D15H-P / D20H-P / D27H-P									
Type	Width B (mm)	Opening range A (mm)	Height C (mm)	Volume (litre)	Self-weight (kg)	Loading Capacity (kg)	Closing force (kN)	Torque (Nm)	Operating weight (t)
D12H-P-60	600	1550	1125	225	470	3000	36	3000	8 – 12
D15H-P-80	800	1540	1154	300	625	4000	36	3000	11 – 15
D20H-P-100	1000	1885	1353	450	1015	5000	43	4000	14 – 20
D27H-P-115	1150	2142	1515	800	1485	6000	63	5000	18 – 27

**Package consists of:** demolition and sorting grab, integrated **KINSHOFER** rotator with 4 fixing points (D12H-P: KM 15 F273/273), cutting edges and non-return valve

Accessories	
Type	Description
KM 690 15t	adapter for rigid mounting – up to 15t
KM 690 20t	adapter for rigid mounting – up to 20t
KM 690 27t	adapter for rigid mounting – up to 27t
OQ60	bolt-on adapter for Oilquick OQ60 – 12t to 18t
OQ65	bolt-on adapter for Oilquick OQ65 – 14t to 22t
OQ70	bolt-on adapter for Oilquick OQ70 – 15t to 28t
OQ70/55	bolt-on adapter for Oilquick OQ70/55 – 18t to 28t
SW10 rigid	bolt-on adapter SW10 for Lehnhoff quick change system MS/HS10 for rigid mounting – up to 19t
SW21 rigid	bolt-on adapter SW21 for Lehnhoff quick change system MS/HS21 for rigid mounting – up to 28t
	adapter for quick exchange systems from other manufacturers available
KM 685 09 E	bolt on side plates
KM 685 10	retrofitted plate to close backside for handling of small material

Requirements of excavator			
<b>Operating pressure:</b>	D15H/D20H and D12H-P/D15H-P/D20H-P	D27H and D27H-P	<b>Rotations:</b>
<b>Pump capacity:</b>	max. 32 MPa (320 bar)	max. 35 Mpa (350 bar)	max. 17 Mpa (170 bar) [KM 15 F273/273: max. 20 MPa]
<b>Hydraulic connection (grab/rotator):</b>	75 - 150 l/min.	75 - 150 l/min.	25 - 60 l/min.
	G 3/4" / G 1/2"	G 1" / G 1/2"	

## Technical drawings

**D27H with metal ribs**  
 Dimensions: C=1380, B=1370, A=750, 300, 550.

**D12H-P with perforated shells**  
 Dimensions: B, Ø 273, KM15F273/273.

We reserve the right to amend specifications without prior notice! **KINSHOFER** GmbH, D-83666 Waakirchen, Germany